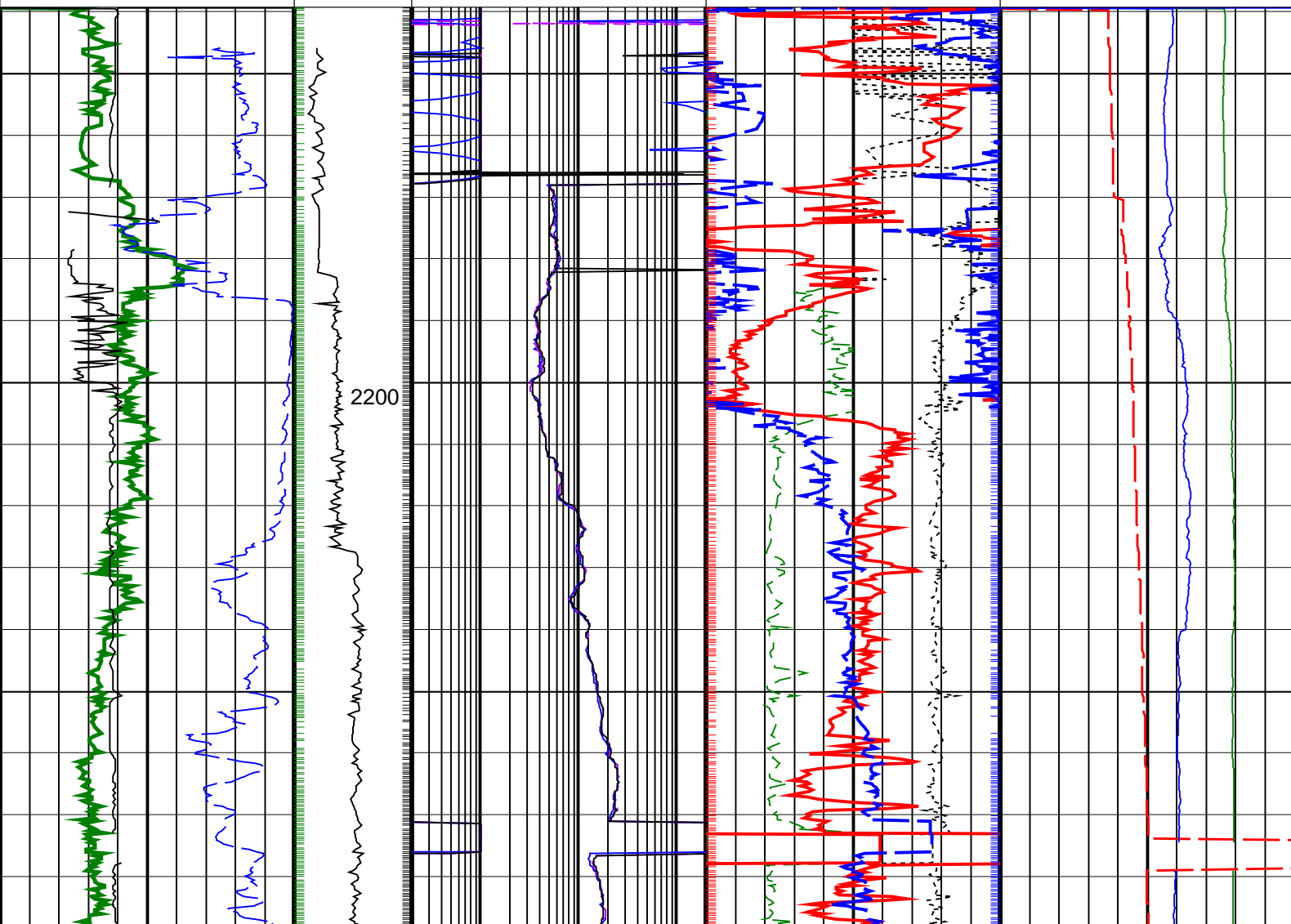
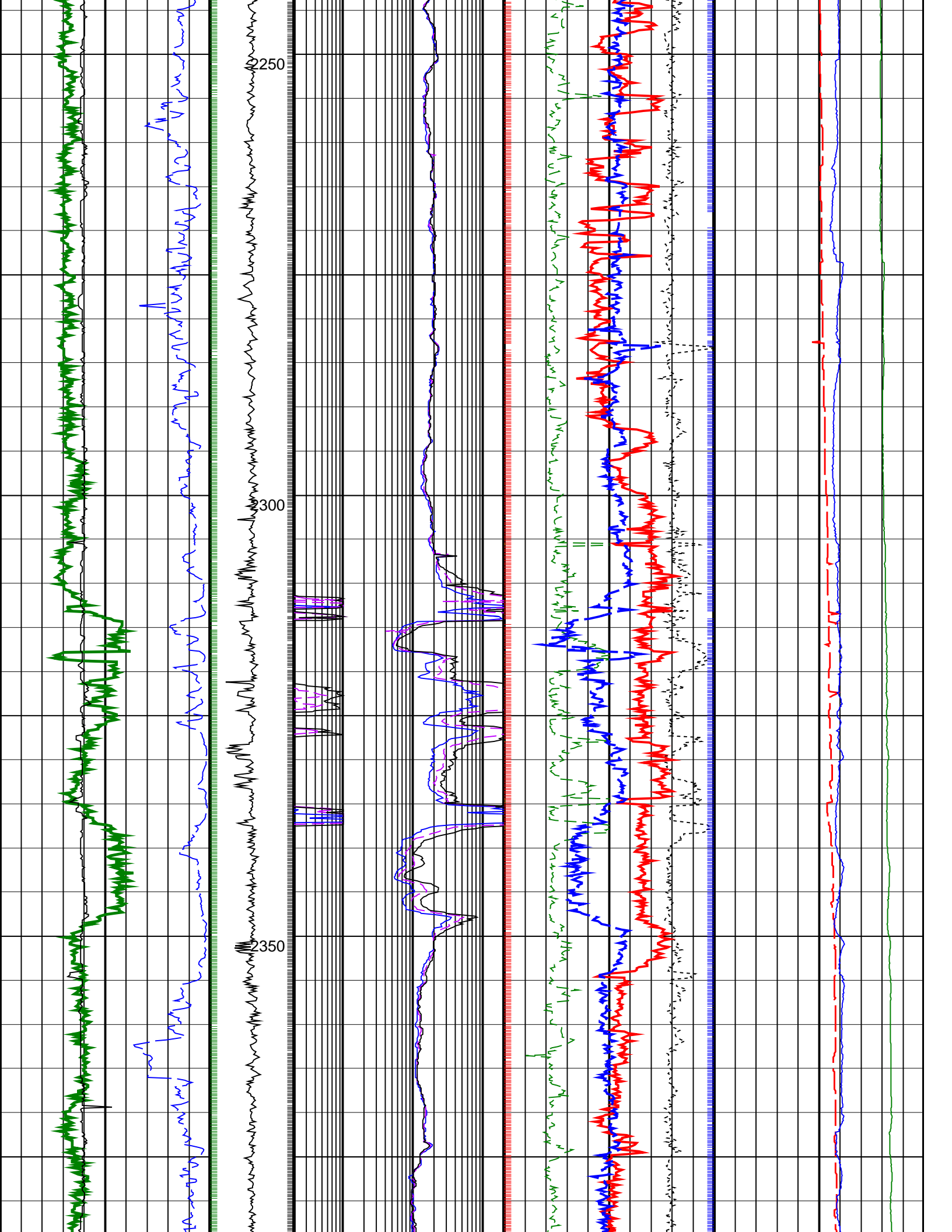


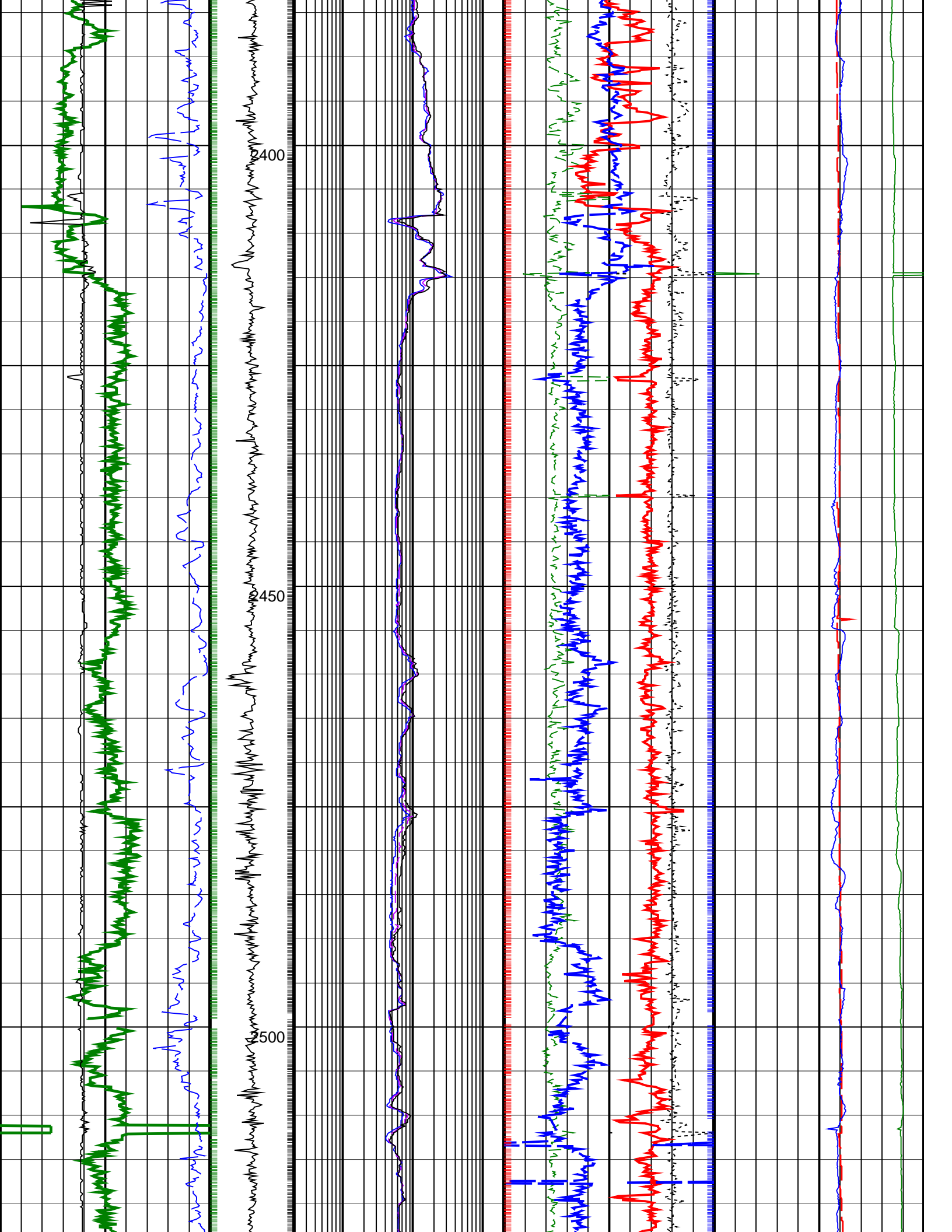
PIP SUMMARY

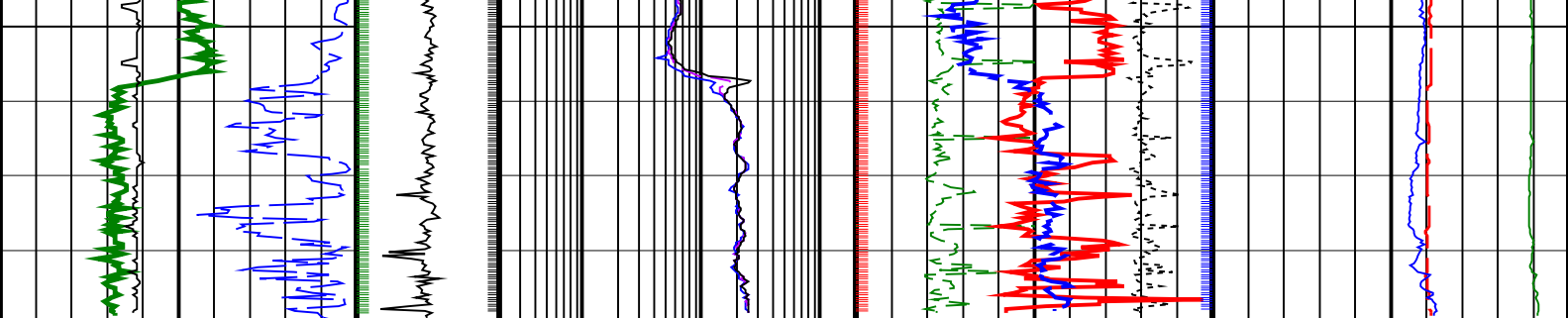
Density Samples +
 Gamma Ray Samples +
 Resistivity Samples +
 Neutron Samples +

Gamma Ray, Average, Real-Time, Computed Downhole (GRMA_DH_ECO_RT) (GAPI)	ARC Phase Shift Resistivity 40 inch at 2 MHz, Real-Time (P40H_ECO_RT) (OHMM)	Thermal Neutron Porosity, Average, Real-Time (TNPH_ECO_RT) (PU)	Equivalent Circulating Density, Real-Time (ECD_ECO_RT) (LB/G)
0 200	0.2 200	45 -15	10 15
Ultrasonic Caliper, Average Diameter, Real-Time, Computed Downhole (UCAV_DH_ECO_RT) (IN)	ARC Phase Shift Resistivity 28 inch at 2 MHz, Real-Time (P28H_ECO_RT) (OHMM)	Photoelectric Factor, Bottom, Real-Time, Computed Downhole (PEB_DH_ECO_RT) (G/C3)	Bulk Density Correction, Bottom, Real-Time Computed Downhole (DRHB_DH_ECO_RT) (G/C3)
6 16	0.2 200	0 10	Downhole Annulus Pressure, Real Time, Computed Downhole (DHAP_DH_ECO_RT) (PSI)
ROP*5 (ROP5) (M/HR)	MWD Collar RPM (CRPM_RT) (RPM)	ARC Phase Shift Resistivity 16 inch at 2 MHz, Real-Time (P16H_ECO_RT) (OHMM)	Bulk Density, Bottom, Real-Time, Computed Downhole (ROBB_DH_ECO_RT) (G/C3)
200 0	0 400	0.2 200	Downhole Annulus Temperature, Real Time, Computed Downhole (DHAT_DH_ECO_RT) (DEGC)
		1.85 2.85	0 200









<div><div>ROP*5 (ROP5)</div><div>200 (M/HR) 0</div></div>	<div><div>MWD Collar RPM (CRPM_RT) (RPM)</div><div>0 400</div></div>	<div><div>ARC Phase Shift Resistivity 16 inch at 2 MHz, Real-Time (P16H_ECO_RT)</div><div>0.2 (OHMM) 200</div></div>	<div><div>Bulk Density, Bottom, Real-Time, Computed Downhole (ROBB_DH_ECO_RT)</div><div>1.85 (G/C3) 2.85</div></div>		<div><div>Downhole Annulus Temperature, Real Time, Computed Downhole (DHAT_DH_ECO_RT)</div><div>0 (DEGC) 200</div></div>
<div><div>Ultrasonic Caliper, Average Diameter, Real-Time, Computed Downhole (UCAV_DH_ECO_RT)</div><div>6 (IN) 16</div></div>		<div><div>ARC Phase Shift Resistivity 28 inch at 2 MHz, Real-Time (P28H_ECO_RT)</div><div>0.2 (OHMM) 200</div></div>	<div><div>Photoelectric Factor, Bottom, Real-Time, Computed Downhole (PEB_DH_ECO_RT)</div><div>0 (----) 10</div></div>	<div><div>Bulk Density Correction, Bottom, Real-Time Computed Downhole (DRHB_DH_ECO_RT) (G/C3)</div><div>-0.25 0.25</div></div>	<div><div>Downhole Annulus Pressure, Real Time, Computed Downhole (DHAP_DH_ECO_RT)</div><div>0 (PSI) 6000</div></div>
<div><div>Gamma Ray, Average, Real-Time, Computed Downhole (GRMA_DH_ECO_RT)</div><div>0 (GAPI) 200</div></div>		<div><div>ARC Phase Shift Resistivity 40 inch at 2 MHz, Real-Time (P40H_ECO_RT)</div><div>0.2 (OHMM) 200</div></div>	<div><div>Thermal Neutron Porosity, Average, Real-Time (TNPH_ECO_RT)</div><div>45 (PU) -15</div></div>		<div><div>Equivalent Circulating Density, Real-Time (ECD_ECO_RT)</div><div>10 (LB/G) 15</div></div>

PIP SUMMARY				
Density Samples				
Gamma Ray Samples				
Resistivity Samples				
Neutron Samples				

IDEAL Version: ID11_0C_01				
IDEAL				